

# Corvil for Network Performance Monitoring (NPM)

"Today's monitoring tools were built to handle yesterday's infrastructures."

- Gartner 2015

## HIGHLIGHTS



- ✓ #1 in the 2015 Gartner NPMD Critical Capabilities report.
- ✓ Trusted by the World's Top Banks and Exchanges.
- ✓ 100% investment protection with transferable licenses.
- ✓ APM, NPM and Network Data Analytics on the same platform.
- ✓ 40% lower TCO than traditional NPM Vendors.

*"We replaced a leading wire data analytics provider with Corvil because it was the only NPM solution that was able to help us solve the problem. Corvil can see what no other product can see."*

-MD, Top 10 Global Bank

## OVERVIEW

You can now **See Everything**, with the world's most advanced Network Performance Monitoring solution from Corvil, now with a **game changing** software-defined pricing model that delivers 40% or more cost savings vs. traditional NPM vendors.

## TOTAL COST OF OWNERSHIP OVER 5 YEARS

Corvil 	NETSCOUT 	riverbed 	ExtraHop 
Corvil 6400 1U: 2x10G ports \$135,500*	Infinistream 2990 1U: 2x10G ports \$349,000*	N/A	EH6000 1U: 2x10G ports \$235,000*
Corvil 6450 1U: 4x10G ports \$256,000*	Infinistream 4995 2U: 4x10G ports \$510,000*	SteelCentral 5100 4U: 2x10G ports \$489,000*	EH8100 2U: 2x10G ports \$446,700*
Corvil 7450 2U: 4x10G ports \$522,000*	Infinistream 7995 3U: 4x10G ports \$820,000*	SteelCentral 6000 5U: 2x10G ports \$682,000*	EH9100 2U: 4x10G ports \$785,500*
<small>Price includes full solution</small>	<small>Price includes nGeniusONE &amp; nGenius PM</small>	<small>Price includes Database, UC &amp; Sunk tools</small>	<small>Price includes full solution</small>

\* Total cost of ownership with perpetual software license option (over 5 years)

## WHAT MAKES CORVIL DIFFERENT?

### LOWEST TCO

Our Software Defined Appliance pricing is an industry first and delivers between 40% and 80% cost reduction compared to other NPM vendors

### EASY TO USE

Corvil NPM is **ONE platform** unlike Netscout and Riverbed, who are a group of acquired technologies loosely tied together by a framework so getting the service insight you need takes too much time and costs too much money.

### SEE EVERYTHING IN HIGH DEFINITION

Most monitoring solutions report averages of data over seconds or minutes. This misses the real traffic behavior that determines user experience. **We always report the true granular behavior of the traffic—even down to individual packets and transactions.**

### PUBLISH AND STREAM

With Corvil you can make network data analytics available to the entire organization to be combined and correlated with other data sources and systems, automatically and in real-time. **Stream data into Splunk, Hadoop, kdb+ or other security or operations support solutions.**

# USE CASES AND SOLUTIONS

## USE CASES



### WAN

Deep visibility into service provider performance. End-to-end latency, loss and microburst analysis. Scale infrastructure and bandwidth with confidence.



### VOIP

Real-time RTP, jitter, loss & MOS analysis. Support for SIP, H.323, RTP, RTCP. QoS visibility and troubleshooting.



### ROUTING & MULTICAST

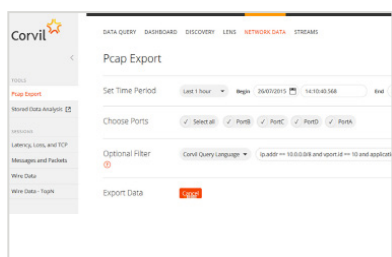
Support for BGP, OSPF, EIGRP, PIM, IGMP & PGM. Alert in real-time when routes are withdrawn.



### DATA CENTER MONITORING

Precision monitoring and rapid troubleshooting for the applications, infrastructure and network in Data Centers.

## SOLUTIONS

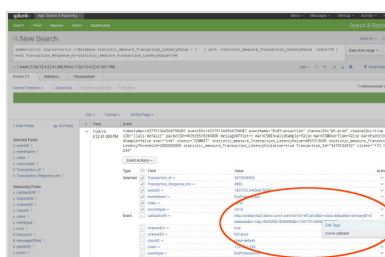


### PACKET CAPTURE

Just plug Corvil in to instantly capture, index and store packets more powerfully than ever before.

With Corvil Analytics, the value of raw packet data is elevated from the realms of ad-hoc operational troubleshooting into real-time and strategic insights for today's digital business.

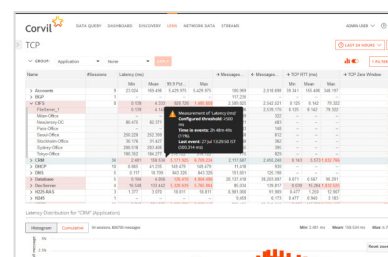
And at greater scale and lower cost than ever, you'll think the price point must be a mistake.



### PUBLISH & SHARE

Not only can you create custom dashboards to view real-time and historic Corvil data and analytics, we also make the data streamable enabling you to publish Corvil data and integrate it with any other systems of your choice.

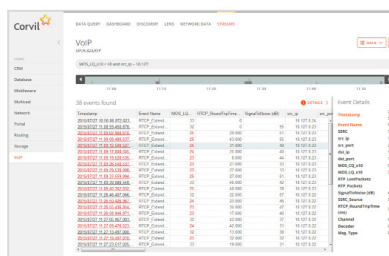
This means that if your Ops teams want to use Corvil dashboards for day-to-day work flows and your business needs to see the data in Hadoop or Splunk you have the power and flexibility to deliver to all teams from one platform.



### NETWORK ANALYSIS

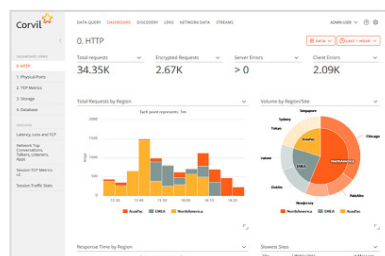
The most comprehensive network protocol and analytics suite available today. One-way and two-way latency, loss, jitter, full TCP analysis, capacity planning, QoS policy design, bandwidth measurement, BGP, OSPF, plus the only solution capable of monitoring your NSP. All in real-time.

With Corvil, not only do you get to understand how your network is performing in real-time but you also get to see the performance of applications as experienced by your users.



### APPLICATION VISIBILITY

Comprehensive decodes for critical applications including HTTP, Oracle, CIFS, VoIP, Video, NetApp, and many more. Complete visibility into who is using the network and for what, including bandwidth consumption, responsiveness, real user experience, and unexpected application traffic.



### TROUBLESHOOTING & PROBLEM IDENTIFICATION

Imagine having complete visibility of both your network and application performance together in just one platform. Imagine the power of multi-tier and multi-segment analysis with granularity and views that SEE EVERYTHING. Imagine how much quicker and easier solving problems would be.



For more information or to contact us, visit [www.corvil.com](http://www.corvil.com)  
 Copyright © 2015 Corvil Ltd. Corvil is a registered trademark of Corvil Ltd.  
 All other brand or product names are trademarks of their respective holders.